

# **SP-MDU-8F-GR**

## **Fiber Optical Terminal Box**

## List of Contents

1. General Introduction .....	Page	3
2. Basic Structure and Configuration .....	Page	3
3. Installation Instruction .....	Page	4
4. Service .....	Page	6

## NOTES:

1. Please read the user's guide before installation.
2. Please pay attention while sealing the cable ports, as inappropriate installation can affect the performance.

## 1. General Introduction

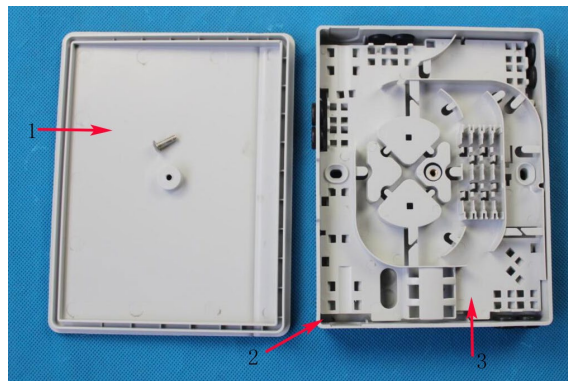
SP-MDU-8F-GR is designed for the FTTH application to splice, protect, and branch fiber optic cables and pigtails. The high fiber splicing capability is especially for revenue house and has a capacity of up to 8 drop cables into dwelling unit.

## 2. Basic Structure and Configuration

### 2.1 Dimension and Capacity

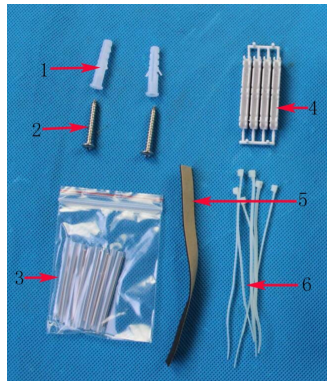
Outside dimension (LxWxH, mm)	168x132x33
Weight (excluding packing box, g)	175g
Number of inlet/out ports	2 optical entrance ports / 8 drop cable ports
Diameter of optical loop cable (mm)	ø12 x2
Splicing capacity	8
Max. number of trays	1
Working temperature (°C)	-40 to +65°C
Insulation resistance	≥2X10 <sup>4</sup> MΩ

### 2.2 Main Components



No.	Name	No.	Name
1	Closure Cover	2	Bottom of Closure
3	Tray		

## 2.3 Accessories



No.	Name	No.	Name
1	Expansion screw	2	Self-tapping screw
3	Protection sleeves	4	Splice holder
5	Sponge	6	Nylon tie

## 3. Installation Instruction

### 3.1 Preparation

- 3.1.1 Check the terminal box type, cable item, and all components before installation.
- 3.1.2 Keep all components dry and clean for installation.
- 3.1.3 Keep working environment clean (dry and no dust).
- 3.1.4 Standard instruments and tools should be used during installing.

### 3.2 Operation of Optical Cable

- 3.2.1 For uncut raiser cable, make a window cut by removing the cable jacket for 100 cm length.
- 3.2.2 Cut the reinforced core and remain about 4 cm.
- 3.2.3 Stripping the fiber bundle for splice preparation, take out fibers and buffered with buffering tube.

**Precaution :** ① **Optical fiber should not be damaged.**  
 ② **Cut the damaged fiber, and re-strip new fiber if there's an accident.**

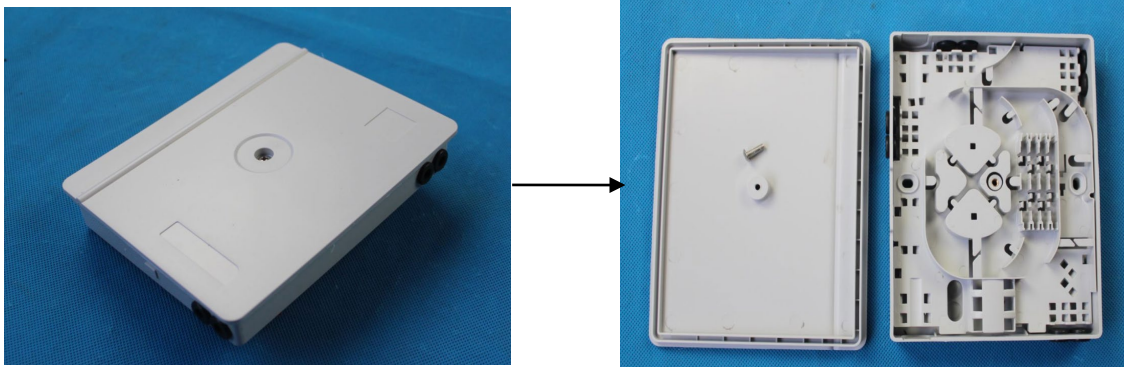
### 3.3 Operation of Optical Cable

- 3.3.1 Strip cable outer coat to length 0.9 meter for cut cable and strip length.
- 3.3.2 Cut the cable reinforced core to length 5 cm.
- 3.3.3 Determine the optic fiber to splice and put into the splice protector.

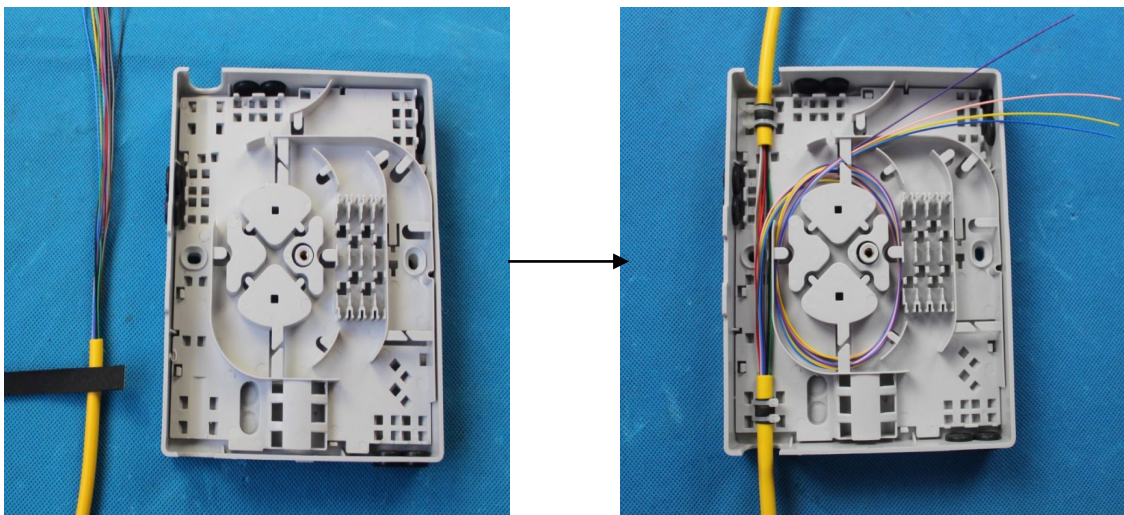
**Precaution :** ① **Optical fiber should not be damaged.**  
 ② **Cut the damaged fiber, and re-strip new fiber if there's an accident.**

### 3.4 Installation Instruction

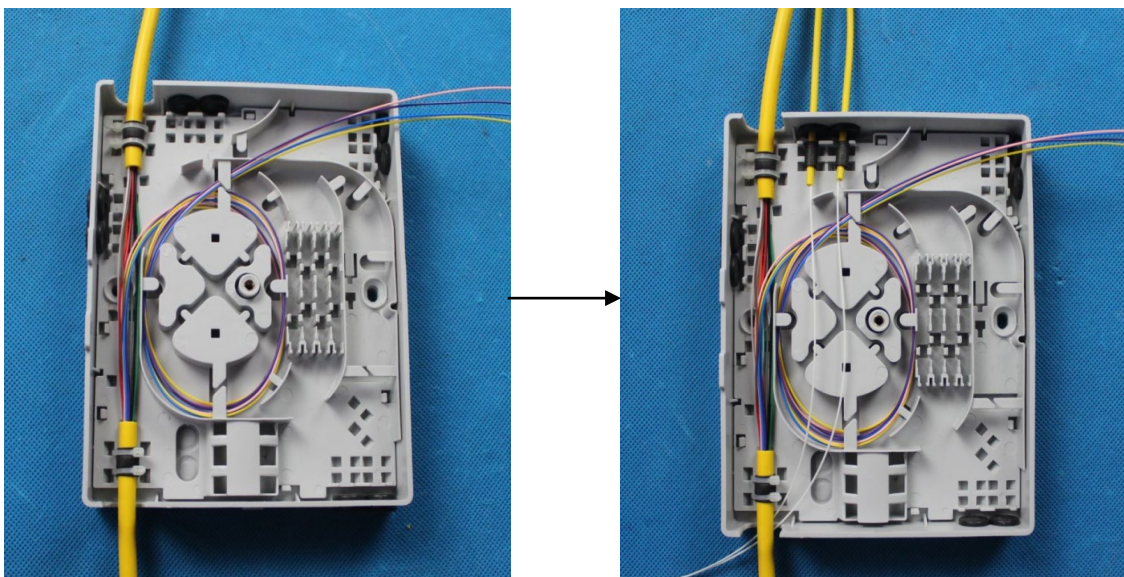
#### 3.4.1 Open the fiber optic terminal box.



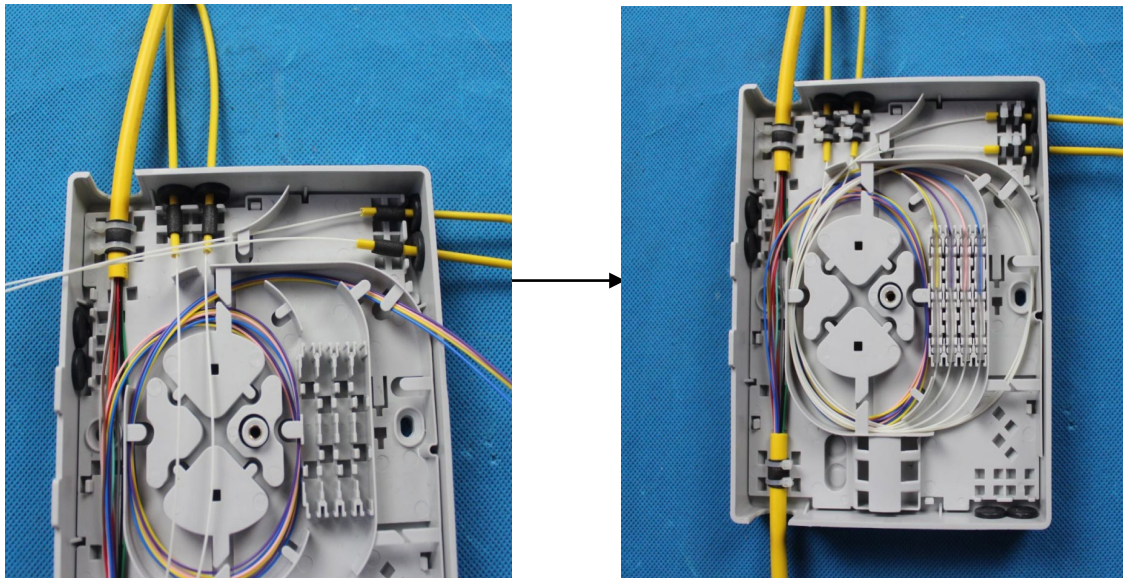
#### 3.4.2 Prepare uncut cable and wind with the sponge, inlet cable into the box and fasten with Nylon tie, coil the optic fiber.



#### 3.4.3 Prepare drop cable and wind with the sponge, fasten with Nylon tie.



- 3.4.4 Install protection sleeves onto the tray, splice drop cable with optic fiber, coil the remaining fibers and close the cover..



## 4. Service

Should you have any questions or suggestions, please do not hesitate to contact your local supplier or contact us. We will provide you with the best service in time.

*The information is assumed to be correct at the time of issue, and is only to be applies to product supplied by Fiberworks AS. The information in this document may not be copied, printed, or reproduced in any form, either in whole or in part, without the written permission of Fiberworks AS.*